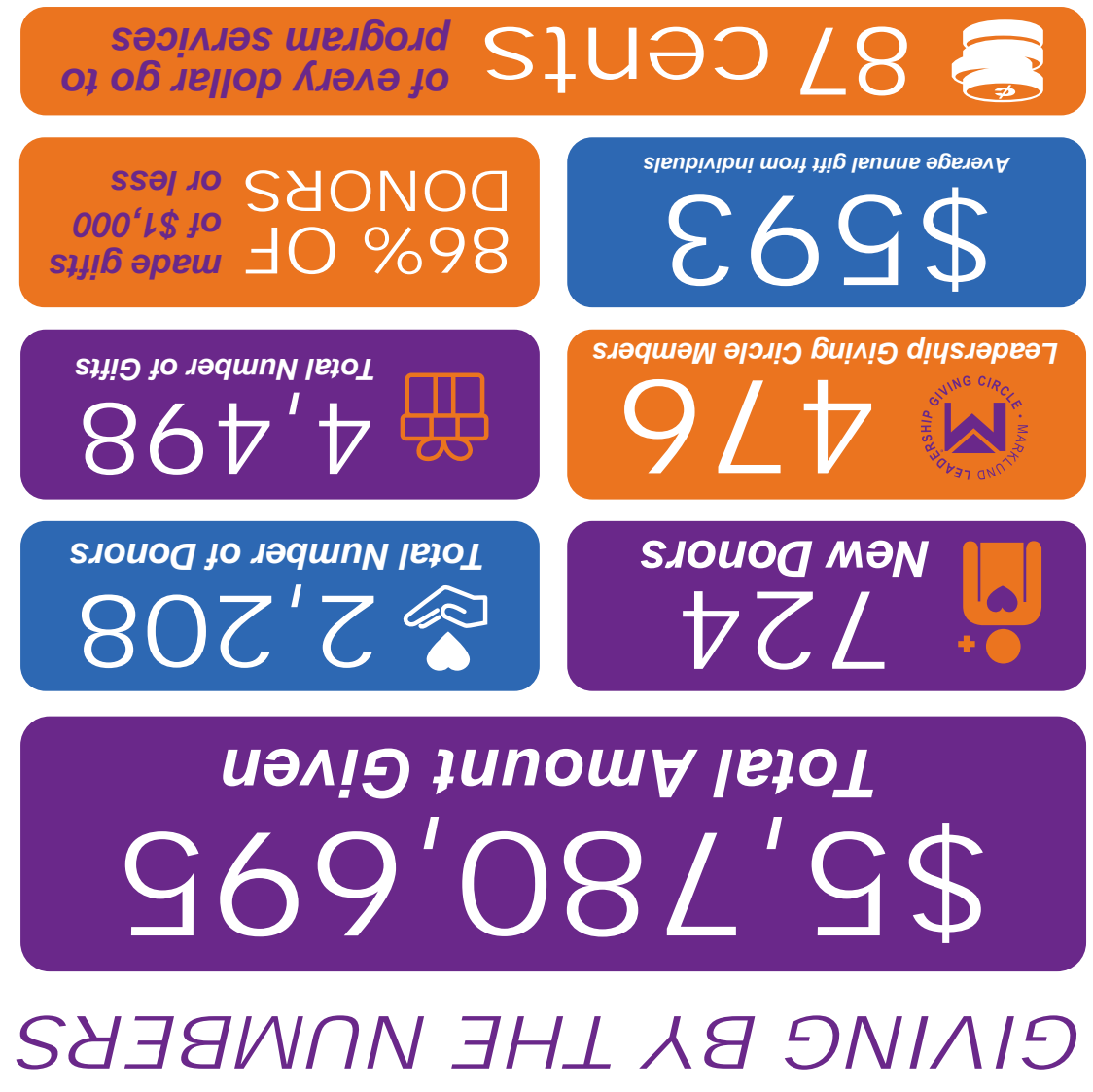
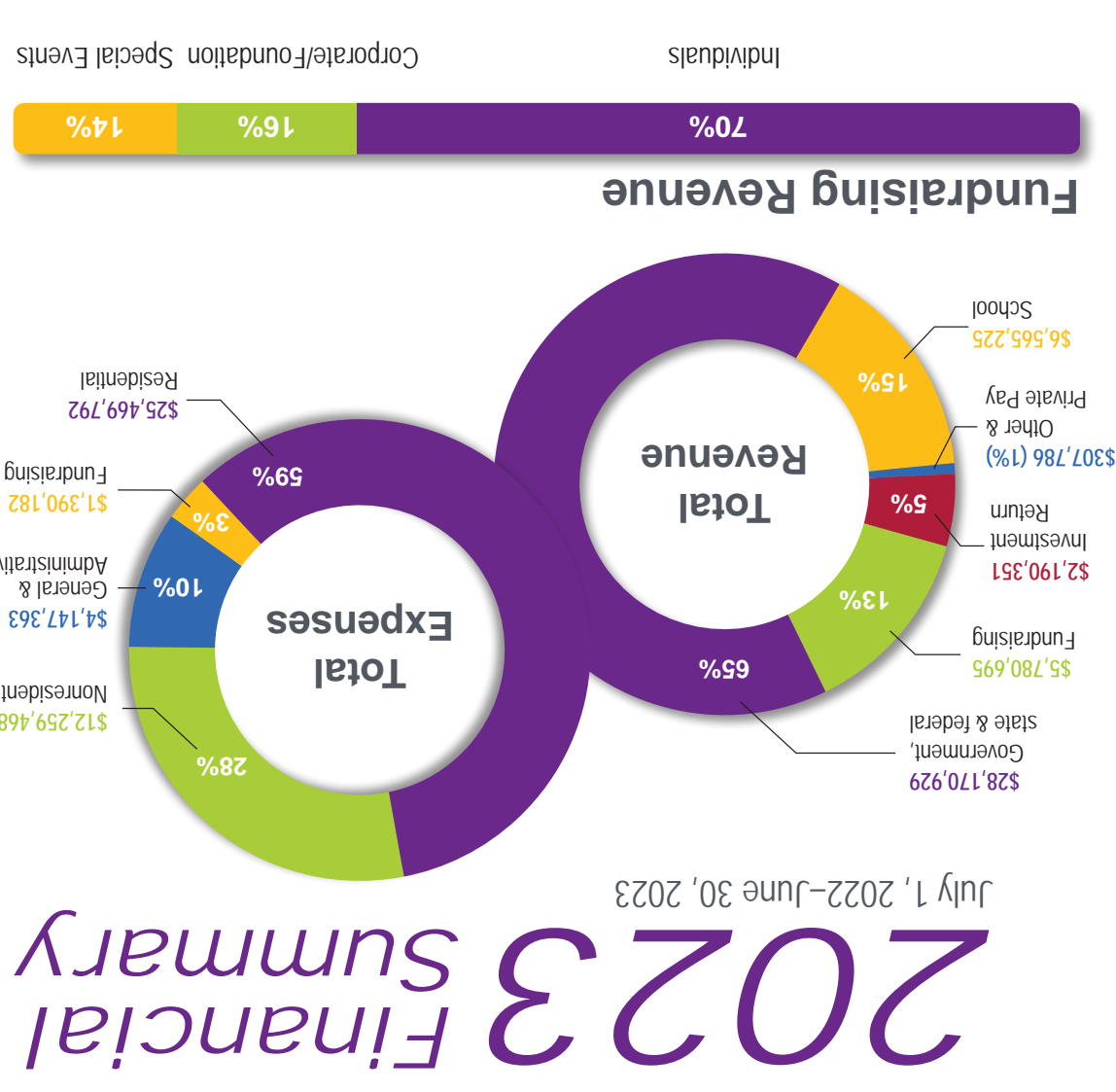


MAKING EVERYDAY LIFE POSSIBLE.



Marklund® Annual Report Fiscal Year 2023



Marklund® www.marklund.org • (630) 593-5500

OUR VISION A happy, safe, purpose-filled life for every individual with intellectual and developmental disabilities.

GENEVA
Marklund Hyde Center & Day School
1S450 Wyatt Drive
Geneva, IL 60134

BLOOMINGDALE
Marklund Philip Center & Day School
164 S. Prairie Avenue
Bloomington, IL 60108

ELGIN
Nathan Education Center
1210 Hunter Dr
Elgin, IL 60120

ELGIN
Marklund Wasmond Center & Day School
1435 Summit Street
Elgin, IL 60120

OUR MISSION
Making *everyday life* possible for individuals with profound disabilities.

Gifts in Action: The Million Dollar Year—You Made a Difference

Marklund's first Run, Walk & Roll 5K debuted in Geneva, 10 years ago, as a fun, community-friendly event to raise awareness and support for our mission and services. Over the years, the event has grown so much that a second race was initiated in Bloomington in 2018. Marklund now welcomes over 1,000 runners, walkers and rollers at our events each year. In 2023, the events cumulatively netted over \$1 million. It's amazing to see the collective impact and support from our community. Local businesses, sponsors, neighbors, friends, family and staff come together to make these events a success.

Marklund's 27-year history to raise one million dollars in a single night! The event's success is due to our visionary leadership from the Top Hat committee, committed sponsors, and generous event attendees.

Marklund's annual ball was first established in 1997. This "don't miss event" has grown year after year and raised more than \$1,237,000 in net proceeds since its inception. 2023 was the first time in the event's history to raise one million dollars in a single night!

Run, Walk & Roll cumulatively nets \$1 Million



M2030 is our strategic plan which will guide us through this decade. Like our founder, Claire Haverkamp, when we see a need, we respond to it! Our goal is to serve the underserved and we plan to do that through expansion, renovation and enhanced program services. We want to serve more people who need us, by developing new programs that will help us fulfill our mission and vision.

In FY2023 we were able to complete the following projects:

Project Playground, Elgin

An inclusive and adaptive playground opened at the Wasmond Center in Elgin for the 61 children and adult residents to enjoy! The playground consists of an accessible merry-go-round, sensory percussion garden, and water feature area.



Nathan Education Center, Elgin

This new 16,000-square-foot building expanded our ability to serve community-based individuals. The building features five classrooms dedicated to the Marklund Day School Life Skills Program, serving students in pre-k and above on the Autism spectrum. It also houses our new "Bridge Builder" program, a Community Day Services Program for adults on the Autism spectrum that have aged out of the school system and are still in need of support services. The Bridge Builder Program provides life-skills development, pre-employment skills, and vocational training.

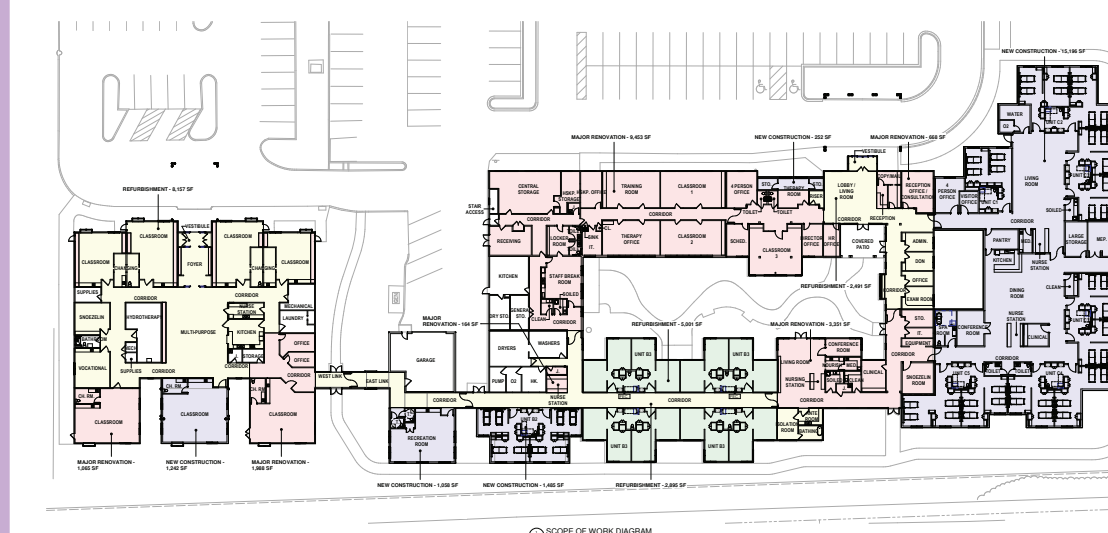


November 2022

December 2022

May 2023

June 2023

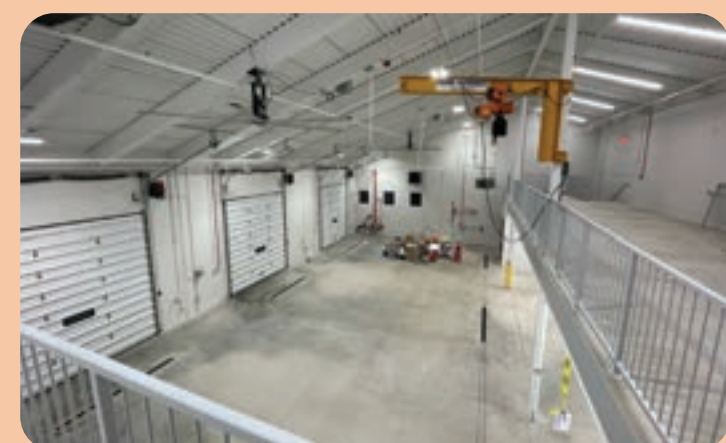


Where we are going... Wasmond Center Expansion!

Marklund is excited to announce our plan to renovate and expand the Wasmond Center in Elgin. This facility serves children and adults with profound disabilities and complex medical needs. We are one of only eight organizations in the state that provide these types of services. This was a monumental decision for the future of Marklund and those we serve.

The 20,000-square-foot expansion project will include space for an additional 24 beds, allowing us to increase our residential capacity to 85 individuals! It will also allow us to expand the acuity level of our services by providing 24-hour vent care. The expansion also includes the addition of a recreation room, sensory room, several nurses' stations, spa room and Community Day Service classrooms.

The project is scheduled to start in spring 2024 and we expect it to be complete by summer 2025.



Maintenance Garage and Offices, Geneva

The new Maintenance Building at the Hyde Center features offices, storage, and a large garage area to meet the growing demands of our Maintenance Department. The department oversees eight buildings, 119,000 square feet of residential facilities, office space, and a fleet of vehicles.



Aquatic Therapy Locker Room Addition, Geneva

The addition to the Aquatic Therapy Center at the Geneva campus added four, full-service locker rooms, two locker rooms for residents and two for staff, which provides easy access to the pool and much needed privacy for the residents, staff and volunteers. The expansion also created additional space for the therapeutic services team. Over 150 aquatic therapy sessions take place each month!

